



**Hazel Close, Palmers Green, London, N13**  
**Offers In Excess Of £600,000 Freehold**

**Anthony Webb**  
ESTATE AGENTS

# Hazel Close, Palmers Green, London, N13

Well presented extended 1930s built end of terrace house which offers four bedrooms and two bath/shower rooms over three bright and airy floors.

Hazel Close is a quiet residential cul-de-sac turning located in the popular New Park Estate within easy reach of local shops and Palmers Green's shops, restaurants, bus routes and mainline station into Moorgate. Firs Farm Wetlands park and popular primary school are also a short walk away.

Hallway • Through lounge with bay window • Modern kitchen/diner with doors to garden • The first floor consists of two double bedrooms with fitted wardrobes and one single bedroom • Modern family bathroom • The converted loft offers a further double bedroom and a modern shower room • Double glazing • Gas central heating • Off street parking to front subject to council consent • Double garage to rear with power and light • Well maintained rear garden with side access.

Enfield Council  
Tax Band E

- Four bedrooms
- 1930s built end of terrace house
- Through Lounge
- Extended kitchen/diner
- Two modern bath/shower rooms
- Double glazing/gas central heating
- Double garage + hardstanding to front
- Rear garden



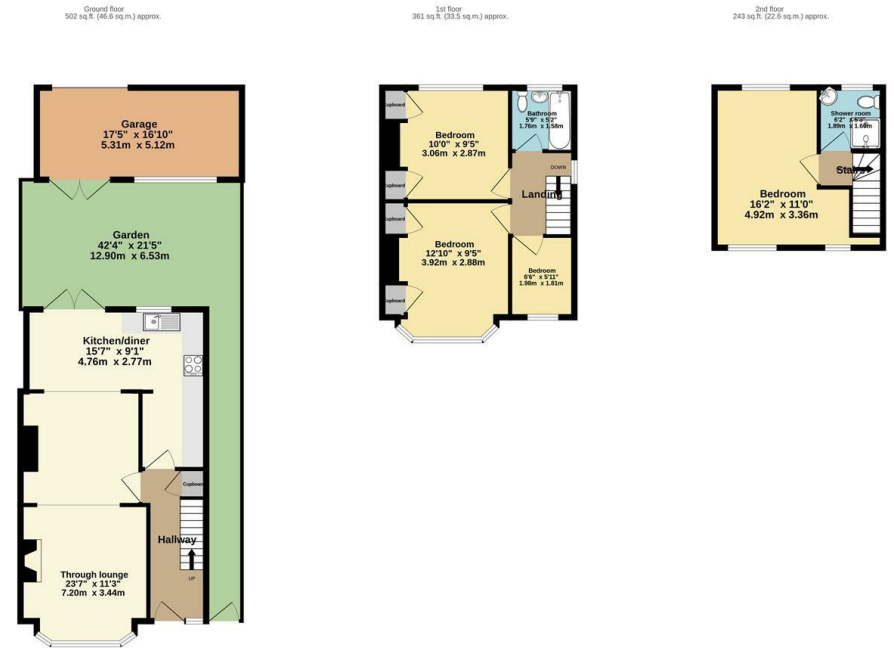


# Hazel Close Palmers Green London N13 5NJ

Tenure: Freehold  
Gross Internal Area: 1105.00 sq ft



Energy Efficiency Rating		Current	Potential
Very energy efficient - lower running costs			
(92 plus) A			
(81-91) B			
(69-80) C			
(55-68) D			
(39-54) E			
(17-38) F			
(1-20) G			
Not energy efficient - higher running costs			
England & Wales		EU Directive 2002/91/EC	
Environmental Impact (CO <sub>2</sub> ) Rating		Current	Potential
Very environmentally friendly - lower CO <sub>2</sub> emissions			
(92 plus) A			
(81-91) B			
(69-80) C			
(55-68) D			
(39-54) E			
(21-38) F			
(1-20) G			
Not environmentally friendly - higher CO <sub>2</sub> emissions			
England & Wales		EU Directive 2002/91/EC	



TOTAL FLOOR AREA: 1105 sq.ft. (102.7 sq.m.) approx.  
Whilst every attempt has been made to ensure the accuracy of the floorplan contained here, measurements of doors, windows, rooms and any other items are approximate and no responsibility is taken for any error, omission or mis-statement. This plan is for illustrative purposes only and should be used as such by any prospective purchaser. The services, systems and appliances shown have not been tested and no guarantee as to their operability or efficiency can be given.  
Made with Metago 02/24

Property particulars as supplied by Anthony Webb Estate Agents are set out as a general outline in accordance with the Property Misdescriptions Act (1991) only for the guidance of intending purchasers of lessees, and do not constitute any part of an offer or contract. Details are given without any responsibility, and any intending purchasers, lessees or third parties should not rely on them as inspection or otherwise as to the correctness of each of them. We have not carried out a structural survey and the services, appliances and specific fittings have not been tested. All photographs, measurements, floor plans and distances referred to are given as a guide only and should not be relied upon for the purchase of carpets or any other fixtures statements or representations of fact, but must satisfy themselves by or of fittings, gardens, roof terraces, balconies and communal gardens as well as tenure and lease details cannot have their accuracy guaranteed for intending purchasers. Lease details, service ground rent (where applicable) are given as a guide only and should be checked and confirmed by your solicitor prior to exchange of contracts. no person in the employment of Anthony Webb has any authority to make any representation or warranty whatever in relation to this property.

348 Green Lanes, Palmers Green, London N13 5TJ  
020 8882 7888  
palmersgreen@anthonywebb.co.uk  
anthonywebb.co.uk

**Anthony Webb**  
ESTATE AGENTS